

# APPENDIX 1

## Year 4 performance dashboard 2017/18



**CITY DEAL**  
Preston, South Ribble & Lancashire

### HOUSING

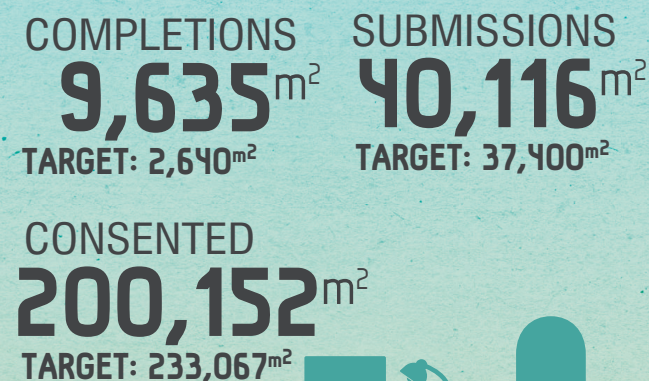


**32 SITES CURRENTLY UNDER CONSTRUCTION**

PUBLIC AND PRIVATE  
SECTOR INVESTMENT

Combined total  
**£44.9m**

### COMMERCIAL FLOOR SPACE



### NOTABLE PROGRESS:

**Moss Side Test Track** – Planning application has been submitted, included within, which is a range of commercial land use.

**Farington Hall Estate** – Disposal process on-going and site activity anticipated in 2019 ahead of City Deal targets.

**South Rings Business Units** – Completion of hybrid business units ahead of scheduled City Deal targets with strong sales/lettings. Further units currently under construction.

**Samlesbury Enterprise Zone** – Academy for Knowledge & Skills (ASK) and Defence Logistics Facility built out. Spine Road linking to A59 to A677 complete and due to open imminently. Ongoing enquiry handling and next phase site delivery strategy under preparation.

**Preston East Employment Sites** – Ongoing build out of small industrial units and car retail showrooms at 'Vision' at Red Scar and other Preston East sites (eg. Sector D site). Preparation for marketing and disposal of Homes England 'Expansion Land' to begin next year.

**UCLan Campus** – Engineering Innovation Centre on site and due for completion January 2019. Preparation being made for start on site of Student Centre in 2019/20.

**Horrockses (Queen's Retail Park)** – Ongoing build out with new food & beverage units and refurbished retail warehouse. Planning application has been consented for additional retail units.

**Guild Hall Theatre** – New leisure destination completed (LeVel). Prince's Central Building – Business case being developed for new Health Hub.

**New Market Hall** – completed

**Eastway** – planning consent obtained for 5,596sq m warehouse and health care centre.



### INFRASTRUCTURE UPDATE

**Preston Western Distributor** – Outline business case submitted and approved, CPO confirmed.

**Penwortham Bypass** – work started on this scheme in December 2017 and is progressing as planned

**Bamber Bridge Improvements** – construction well underway

**Fishergate Central Gateway Phase 3** – work well underway.

### COMPLETED SCHEMES

**Broughton Bypass** – the bypass was completed and opened in October 2017.

**South Ribble Campus Strategy** – work completed in 2017

**Preston Bus Station and Car Park Improvements** – work completed summer 2018

**Pope Lane Roundabout** – work on the new junction was completed in 2017.

### GENERAL ACTIVITY

Work on the city deal review commenced in April 2018. A full review of the City Deal housing-sites commenced in March 2018. Invest Central Lancashire Prospectus launched February 2018

CITY  
DEAL  
SO FAR

Commercial floorspace  
**55,592m<sup>2</sup>**

Houses  
**3,702**

Jobs **13,159**

### JOBS

**224**

JOBS associated with commercial floorspace completions

**517**

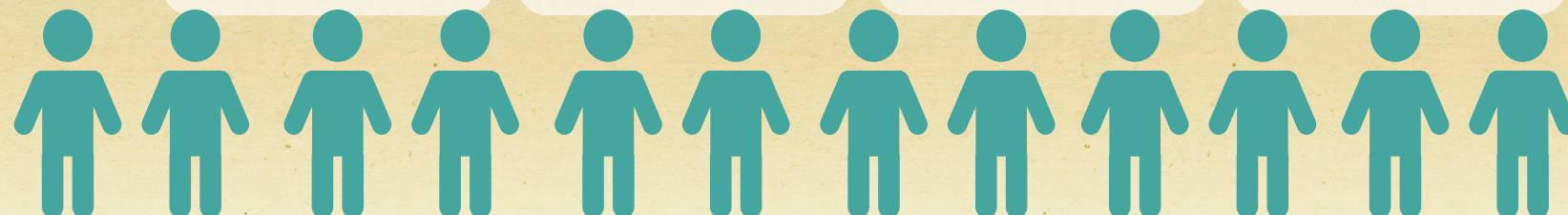
JOBS associated with infrastructure projects

**809**

JOBS associated with employment at existing commercial premises

**120**

JOBS created through business support activities



### SKILLS AND EMPLOYMENT

The City Deal 'Bridge the Gap' activity has been developed and rolled out in schools with STEM (Science Technology Engineering and Maths) Ambassadors. Feedback has been very positive with **97% of pupils indicating that they know more about STEM career pathways as a result of the activity and 85% more about City Deal.**

